

# SharedLivesPlus

THE UK NETWORK FOR SMALL COMMUNITY SERVICES



## SHARED LIVES/ADULT PLACEMENT IN WALES 2013 EXECUTIVE SUMMARY

## Shared Lives/Adult Placement model of care

Shared Lives/ Adult Placement is a regulated form of social care delivered by Shared Lives/ Adult Placement carers who are approved by a registered Shared Lives/ Adult Placement scheme.

Shared Lives/ Adult Placement carers are recruited and approved through a rigorous assessment process which is itself subject to quality assurance by an independent panel. Shared Lives/ Adult Placement always involves the Shared Lives/ Adult Placement carer sharing their home and family life with the person using Shared Lives/ Adult Placement. It can be offered to anyone aged 18 (or in some cases 16) or over.

Shared lives/ Adult Placement care may include:

- long term accommodation and support or
- short breaks or other time limited live-in support, such as intermediate care or
- day time support.

A maximum of three people may be supported at any one time by a Shared Lives/ Adult Placement carer. Shared Lives/ Adult Placement arrangements always involve the following processes, all of which may also be found in other forms of regulated and unregulated care and support:

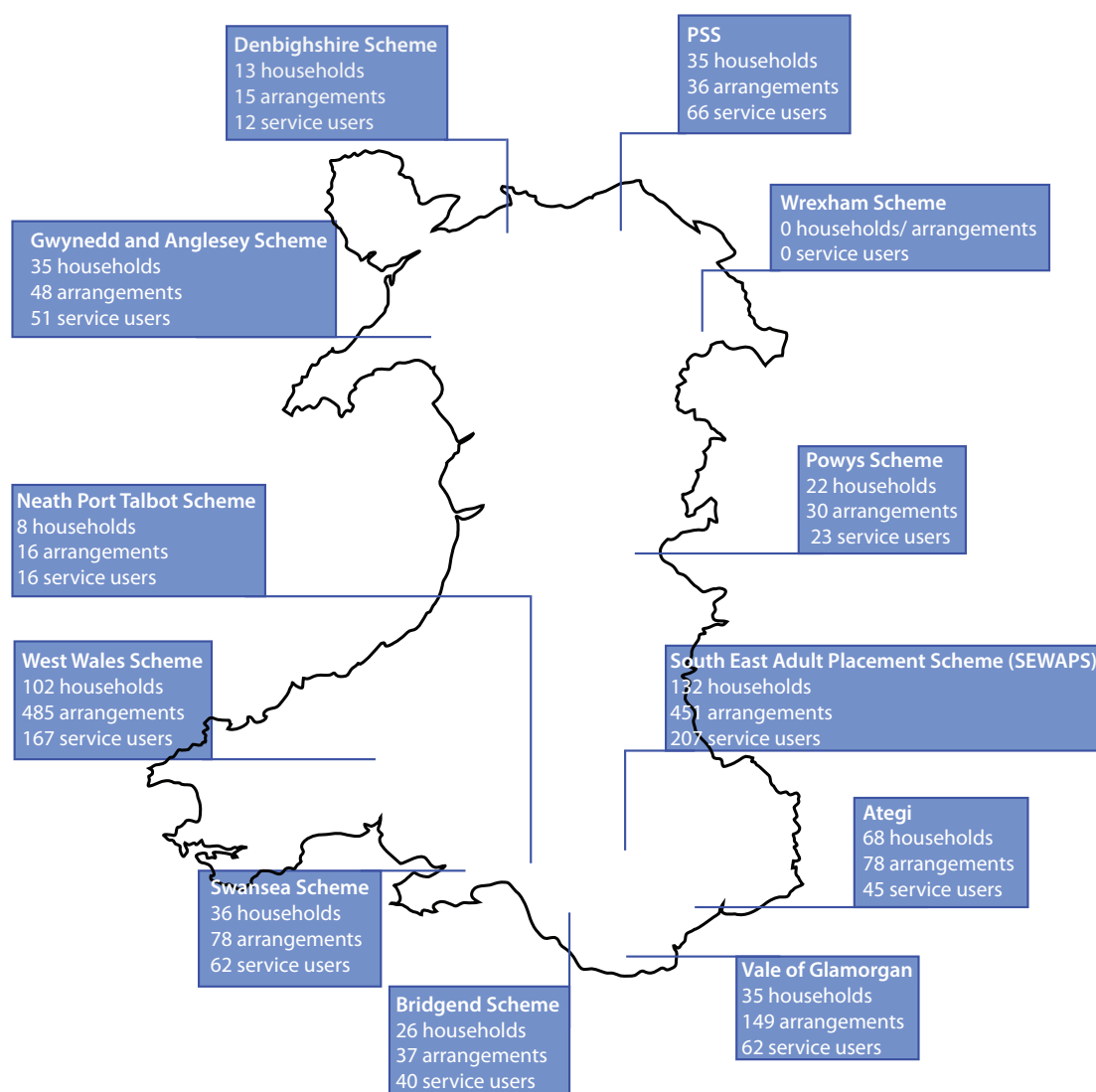
- **Matching:** Shared Lives/ Adult Placement arrangements are formed using a matching process which involves participants getting to know each other at their own pace, before making any long term commitment to sharing home and family life.
- **Monitoring and safeguarding by the Shared Lives/ Adult Placement scheme:** the registered scheme manager remains ultimately responsible for the quality and safety of care and support in every Shared Lives/ Adult Placement arrangement.
- **Self-employment:** Shared Lives/ Adult Placement carers are self-employed and can access the Shared Lives tax break. Shared Lives/ Adult Placement carers are not paid by the hour and they do not work to a fixed schedule. They are paid in line with the expectations set out in the agreement. Shared Lives/ Adult Placement carers are under no obligation to agree to any care and support arrangement offered. Shared Lives/ Adult Placement carers do not directly employ staff to help them provide care.
- **Payment for care is made to the scheme not the carer:** whether the care and support is funded using Direct Payments, people's own money or is commissioned by the council or NHS, the registered scheme receives payment for the care provided and pays the self-employed Shared Lives/ Adult Placement carer. People using Shared Lives/ Adult Placement are assessed to pay their contribution under Fairer Charging rules.
- **Any longer term accommodation provided is arranged under a licence to occupy.** People living in Shared Lives/ Adult Placement arrangements may pay for their accommodation using Housing Benefit and pay their contribution towards food, utilities etc from their benefits or other income.

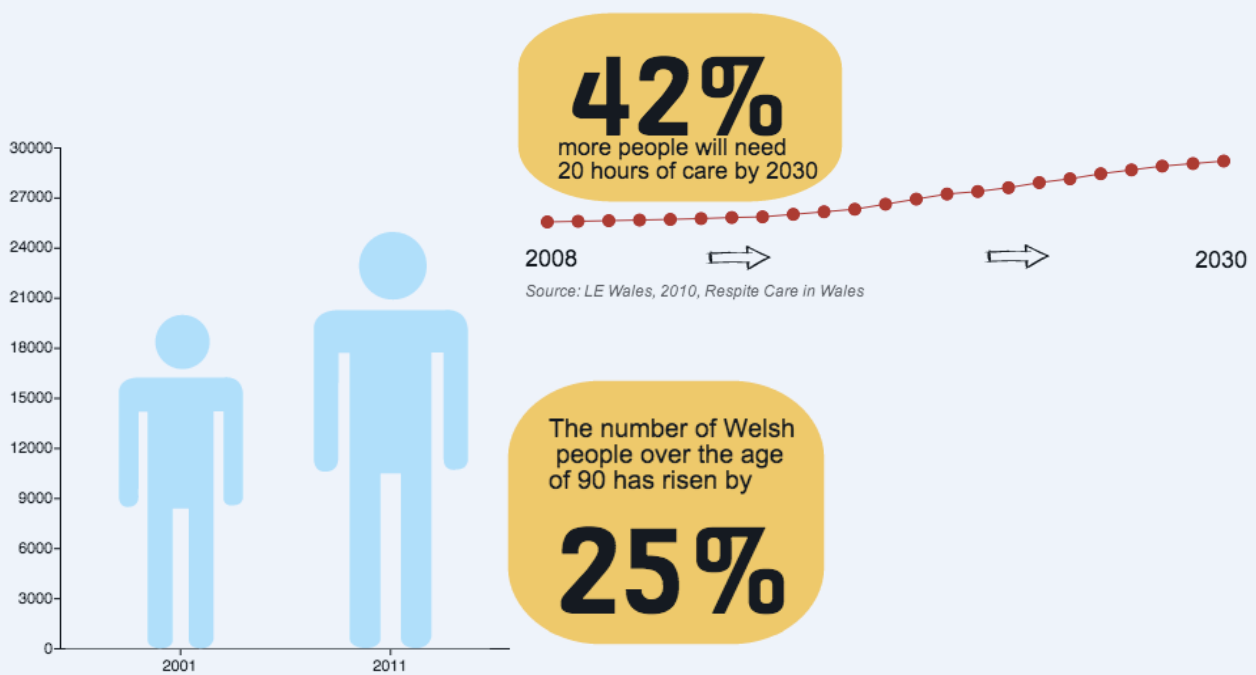
## Shared Lives/Adult Placement Arrangements in Wales

In the last 12 months, Shared Lives/ Adult Placement schemes in Wales worked with 512 carer households. In some households more than one person is an approved Shared Lives carer which brings the total number of carers approved by Shared Lives schemes to 676. Over the 12 month period, these 676 Shared Lives carers provided 1,423 long-term and short-term arrangements and 127 day support arrangements. The total number of nights provided by 7 schemes was 85,985.

As the sizes of the schemes vary, so do the number of arrangements that they provide. The table below includes the total numbers for the whole of Wales as well as an indication of the range of variation by providing the lowest as well as the highest numbers currently in Wales. More detailed information is provided in the attached map (appendix 1)

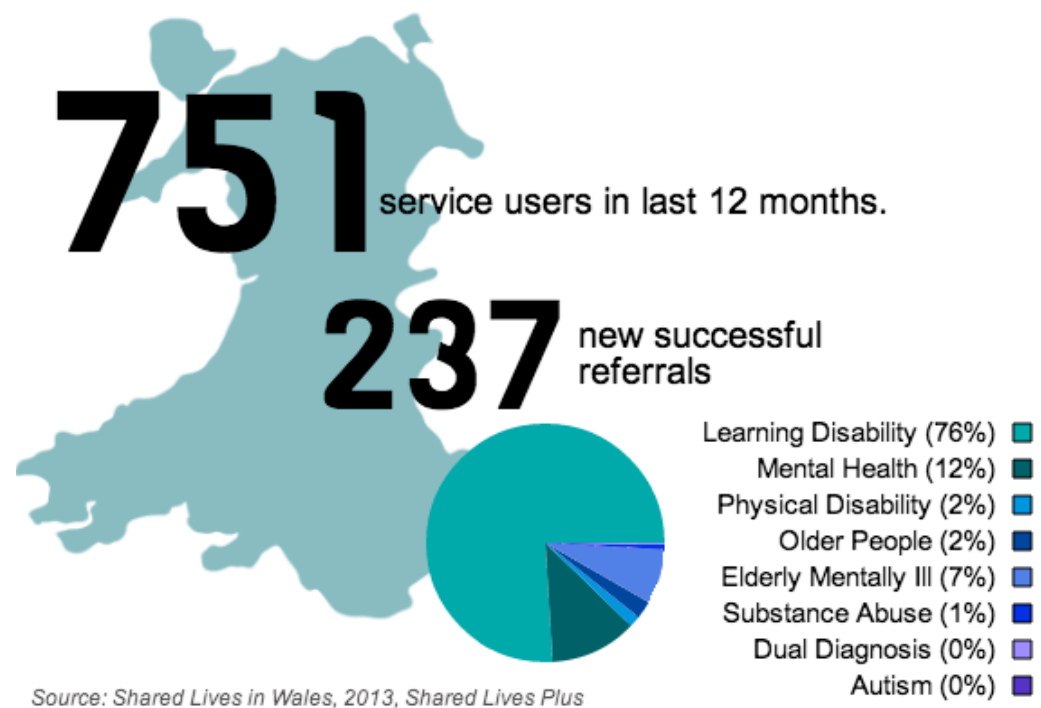
	TOTAL	Lowest	Highest
Shared Lives households	512	13	132
Service users supported	751	12	207
Arrangements	1,423	15	451





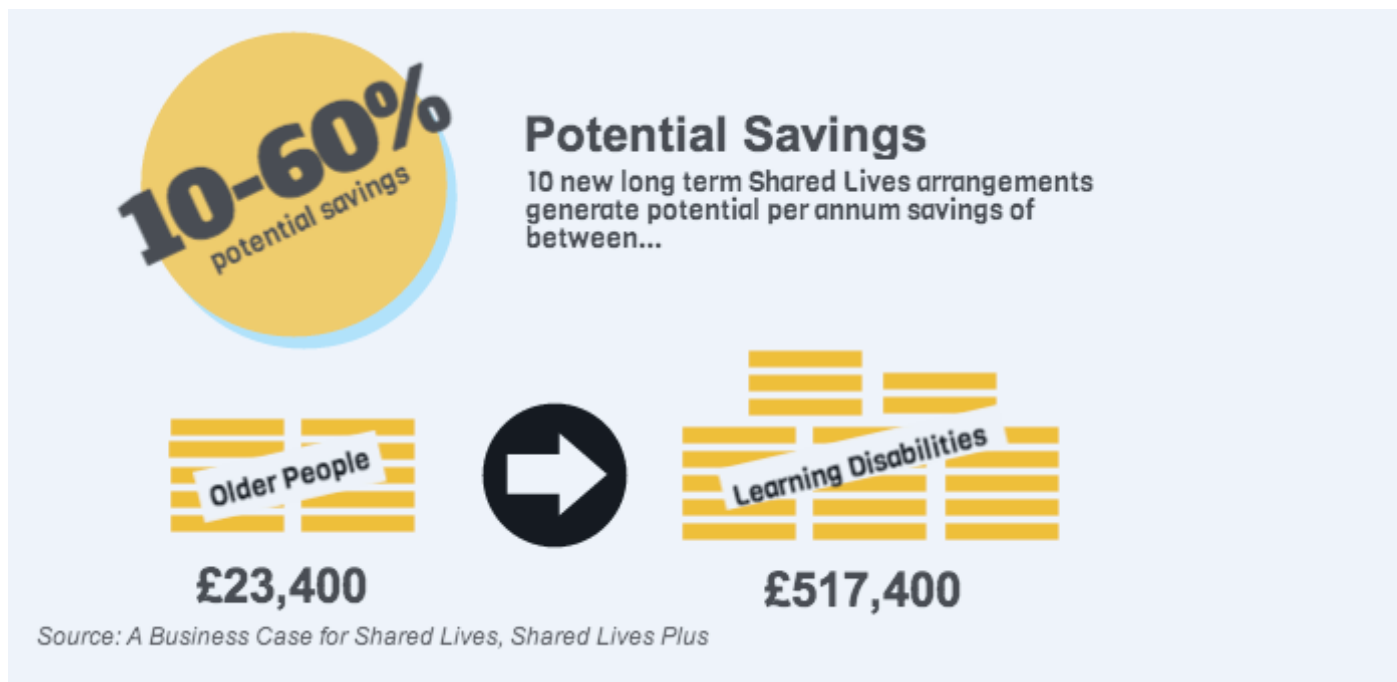
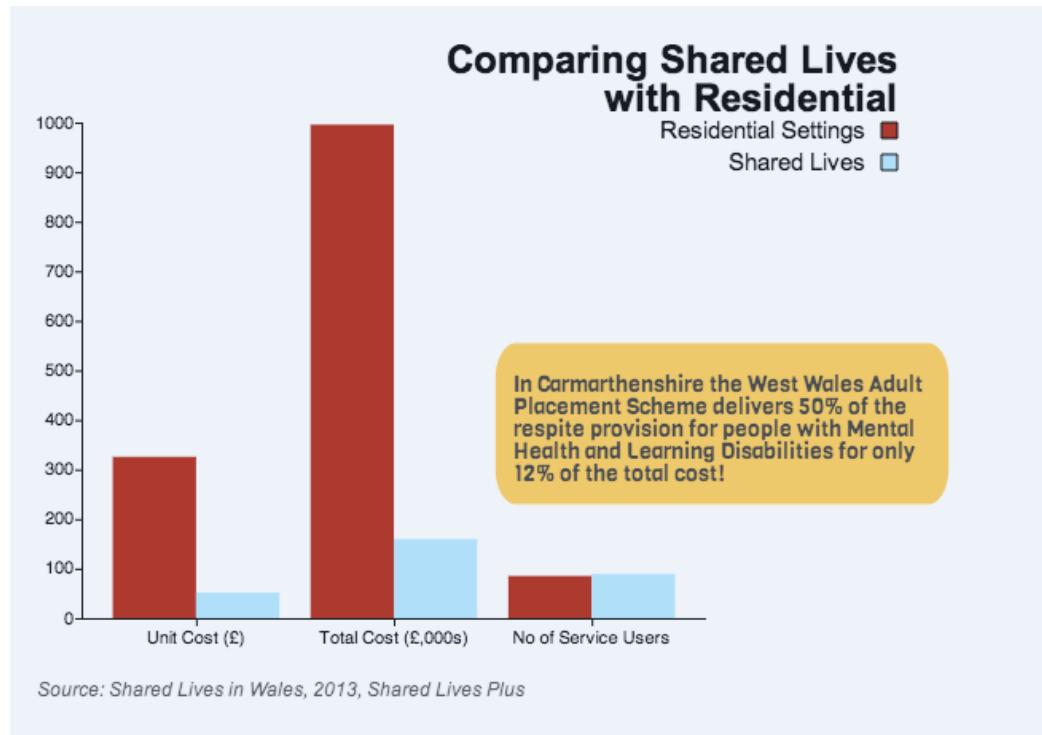
Source: ONS, 2011 Census, Key Statistics for Unitary Authorities in Wales

# Caring for people in Wales



Source: Shared Lives in Wales, 2013, Shared Lives Plus

# Shared Lives in Numbers



## Recommendations

Schemes provided the following recommendations about the development of Shared Lives/ Adult Placement in Wales:

- **Breaking the pattern of care managers doing ‘the same old thing’ when considering care options**

Two schemes described awareness amongst care managers about the Shared Lives/ Adult Placement model of care as poor whilst three schemes talked about a mixed picture that could be improved. Another issue raised was the use of Shared Lives/ Adult Placement arrangements as a crisis management tool. A more proactive and planned approach could promote more personalised options of care and prevent the institutionalisation of service users in residential settings.

In Carmarthenshire Shared Lives/ Adult Placement is the default option of care. Care managers will have to consider a Shared Lives/ Adult Placement arrangement for service users first and justify the use of other forms of care if a Shared Lives/ Adult Placement arrangement is not utilised.

- **Providing expert technical support on complex issues**
- **Co-ordinate marketing and promotion of Shared Lives/ Adult Placement across the whole of Wales**
- **One unified approach to regulation and inspection**

Three schemes identified inspections as one of the main areas of concern for them. Many schemes talked about inspections being geared towards residential settings.
- **Acknowledging and showing the value of the Third Sector as a provider**

Both Third Sector providers felt that that Shared Lives/ Adult Placement is often seen as a local authority provision in Wales and that there seems to be a need to raise awareness of Shared Lives/ Adult Placement that includes the third sector.
- **Stronger commitment at a national level that acknowledges the Shared Lives/ Adult Placement model as not just an add-on but on equal footing with other forms of care**
- **Strong engagement and consultation with Shared Lives/ Adult Placement carers**
- Other areas identified in the report that should be explored further are:
  - **research project to demonstrate the outcomes and savings delivered by Shared Lives/ Adult Placement in Wales**
  - the development of a **recruitment strategy for Welsh speaking Shared Lives/ Adult Placement carers**
  - the development of a **qualification framework for Shared Lives/ Adult Placement staff**
  - further development and diversification of **respite provision by Shared Lives / Adult Placement schemes.**
  - better **representation of BME groups** amongst Shared Lives/ Adult Placement carers and service users

## Shared Lives Plus – Our Commitments for the next three years

Shared Lives Plus is committed to support local schemes and Shared Lives/ Adult Placement carers to achieve the improvements and changes that they wish to see in Wales.

Over the next three years, Shared Lives Plus will:

- Develop strategies to raise the profile of the Shared Lives/ Adult Placement model of care amongst commissioners, potential carers (especially amongst Welsh speakers and BME groups) and the general public.
- Provide advice and support to schemes and carers on complex and technical issues.
- Lobby CSSIW for a unified and consistent approach to inspection and regulation.
- Explore the development of a qualification framework for Shared Lives/ Adult Placement officers and carers in partnership with the Welsh Government, the Care Council for Wales (CCW) and local schemes.
- Engage and consult with Shared Lives/ Adult Placement carers in Wales.
- Ensure that Third Sector providers are equally represented in promotional strategies and developmental plans.
- Develop a business case for Shared Lives in Wales

## Shared Lives/ Adult Placement in Real Life

### Linda - West Wales Scheme

Linda had been living with Pam for many years, during which time Linda had been supported to develop her self-confidence and independent living skills. She recently reached her ultimate goal and moved into her own flat.

Linda has been a very active individual within the world of Shared Lives Adult Placement participating in consultation on the review of regulations with the Welsh Assembly Government's highest policy makers. She is able to make her feelings known and is also able to advocate in various meetings on behalf of other individuals to ensure that her and others' rights are represented.

Pam acknowledges that during the time that Linda has been living with her, they have supported each other through good and bad times. For example, Pam has recently had a period of illness where she felt that Linda had provided her with invaluable support and understanding; in return Pam has supported Linda to rebuild relationships with her family as contact had been very difficult for many years.

Pam explained that she felt they worked well together as a team, and that their friendship will continue for many years to come, even though Linda has now moved on to live in her own flat. Linda enjoys visiting Pam and she is reassured that Pam is on the end of the phone should she need help.

